

Automatic Disc Filter

HIGH EFFICIENCY SELECTIVE FILTER FOR SUSPENDED SOLIDS

Design Standards

Inlet water pressure: Max. 8.0 bar, Min.:2.0 bar

Operation temperature: $\leq 50^{\circ}\text{C}$

PH: 4-14

Materials of construction:

Filter unit housing: Glass fiber reinforced polyamide (PA*)

Discs: polypropylene (PP)

Piping: HDPE*/SS304/Carbon steel

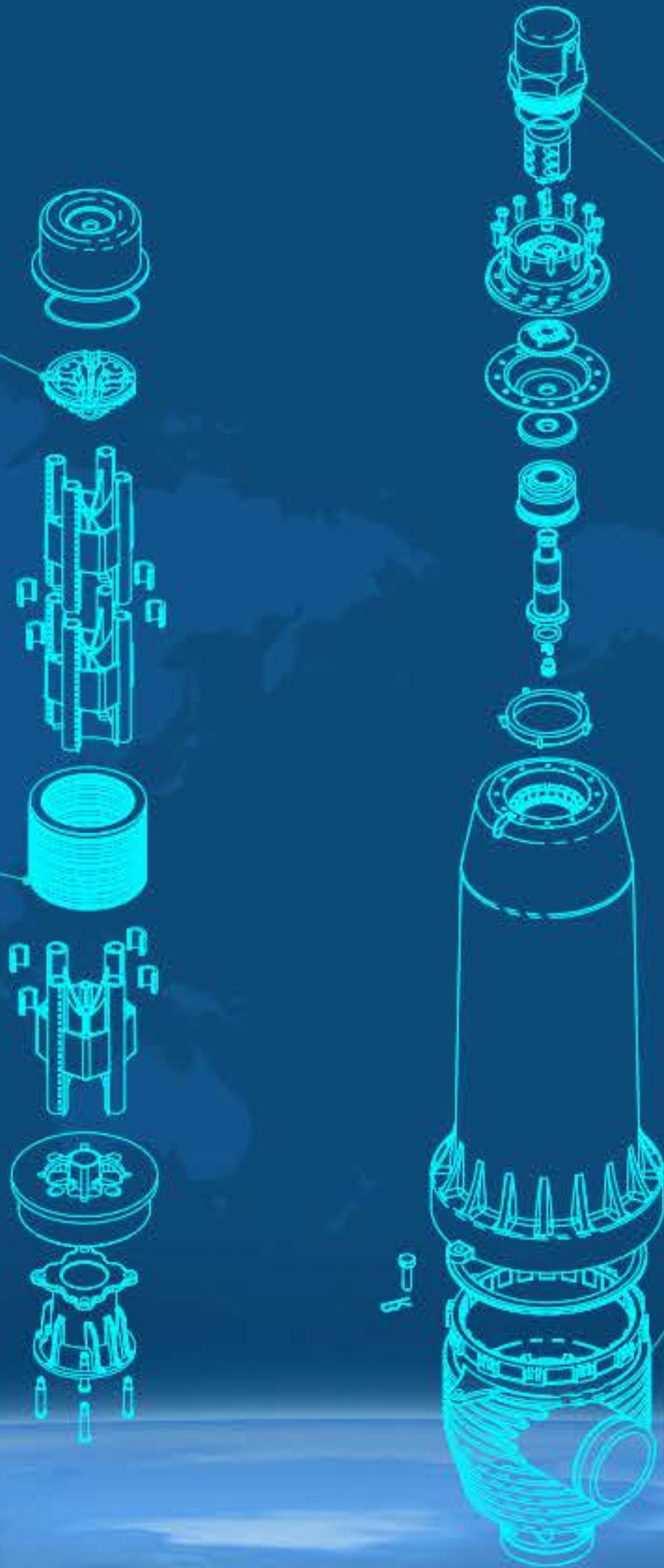
Sealing element: NBR*/EPDM



**The only Non-Spring
Disc filter**



**Unique 5 μ m, 10 μ m
filtration accuracy**



**Each unit has an independent
Air intake & exhaust valve
to ensure the best
backwash effect.**

**Centrifugal tangential
water inlet improves
filtering effect.**

Air intake & exhaust valve

Each unit has its own large-flux air intake & exhaust valve, greatly improves the backwashing effect; it performs as an indicator of operation process, water saving 40%.



Air buoyancy check valve technology

Adopt plastic check valve design, no metal or rubber parts in contact with water, avoid rubber aging and metal corrosion and other safety risks, especially suitable for brackish water and sea water filtration.



Low backwash pressure

Adopt diaphragm hydraulic technology, compressing discs making backwash pressure as low as 1.2bar, energy saving 20%.



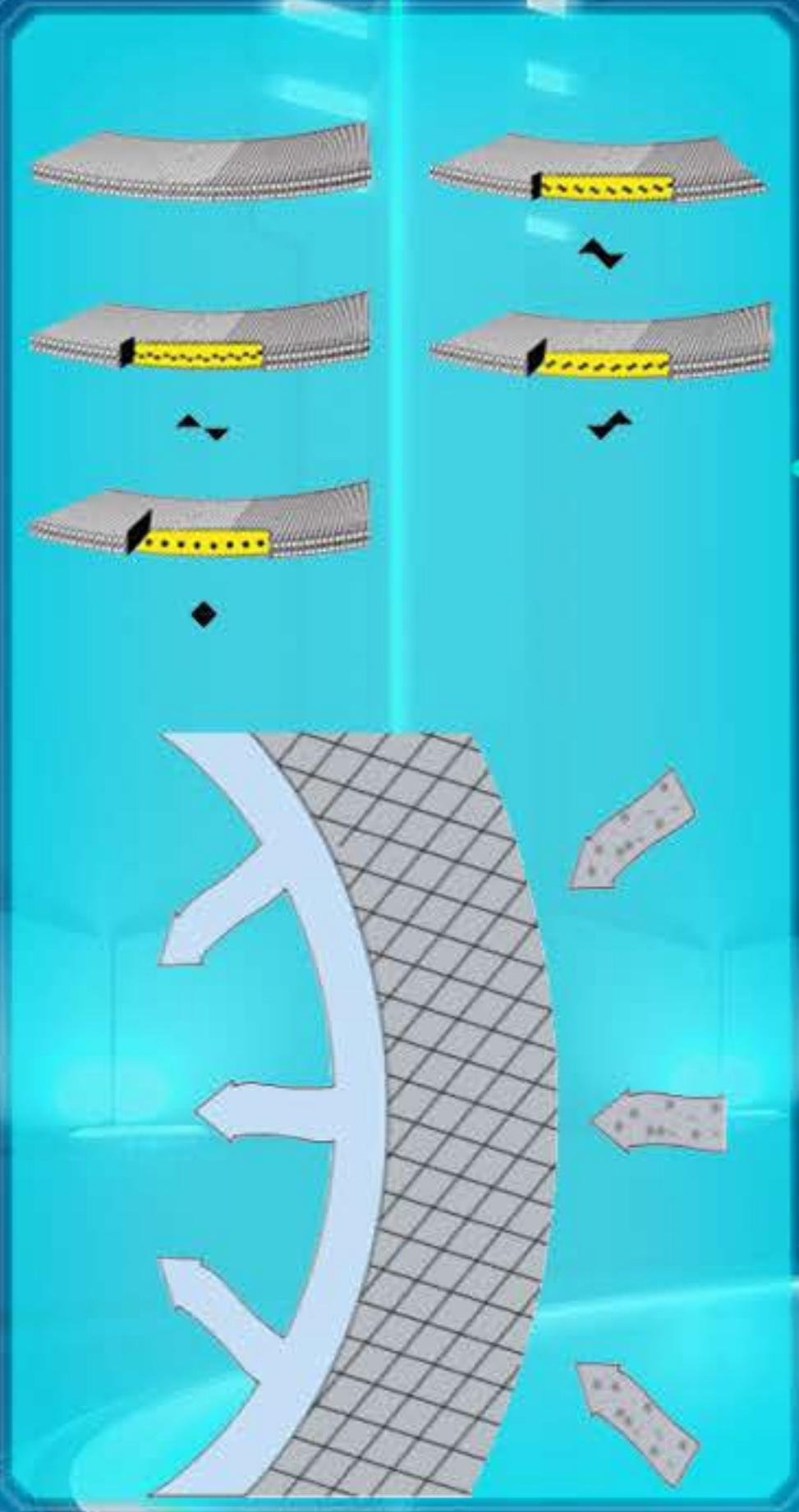
Self-locking sealing technology

The filter adopts self-locking buckle with a specially designed sealing ring, which is quick to install and easy to maintain, the sealing effect is safe and reliable.



5μm 10μm

Discs							
Mesh	75	110	150	288	625	1250	2500
Micron	200	130	100	50	20	10	5



Each disc has grooves in different directions on both sides, and the grooves on the adjacent surface form many intersections by compression.

The Intersection forms a large number of cavities and irregular passage, the solid particles are intercepted when water flows through.

Disc filter operating principle video



Operating Status

Water inlet pressure drives the diaphragm device to compress the disc pack to form a dense filter cartridge. The suspended solids are intercepted by filter cartridge. The filtered water passes through check valve in the center of filter cartridge to the lower water outlet.



Backwashing process

1、 By the action of the backwash valve, the water inlet is automatically switched to the drain, and the backwash water passes through four pipes with nozzles to push up the filter pressure cap and diaphragm device, loosen the disc pack, and water spray out along the tangent line. The discs are rotated, and the trapped suspended solids are clean away thoroughly.

2、 The red float inside the transparent cover makes it easy to observe and judge the condition of the inner filter cartridge from the outside.

3、 The top air intake & exhaust valve will open automatically, air enters the filter cavity, which helps to improve the spray cleaning effect.



Disc Filter Structure

Discs



Cartridge



Unit



System





Sea Water Desalination

A desalination project in the Philippines

Filtration Grade: 100 μ m

Model: JYH3-22(2 sets)

Flow Rate: 1000m³/h





Multi-media Filter Pretreatment

Pharmaceutical company in Jilin

Filtration Grade: 100 μ m

Model: JYS3-10 (4 sets)

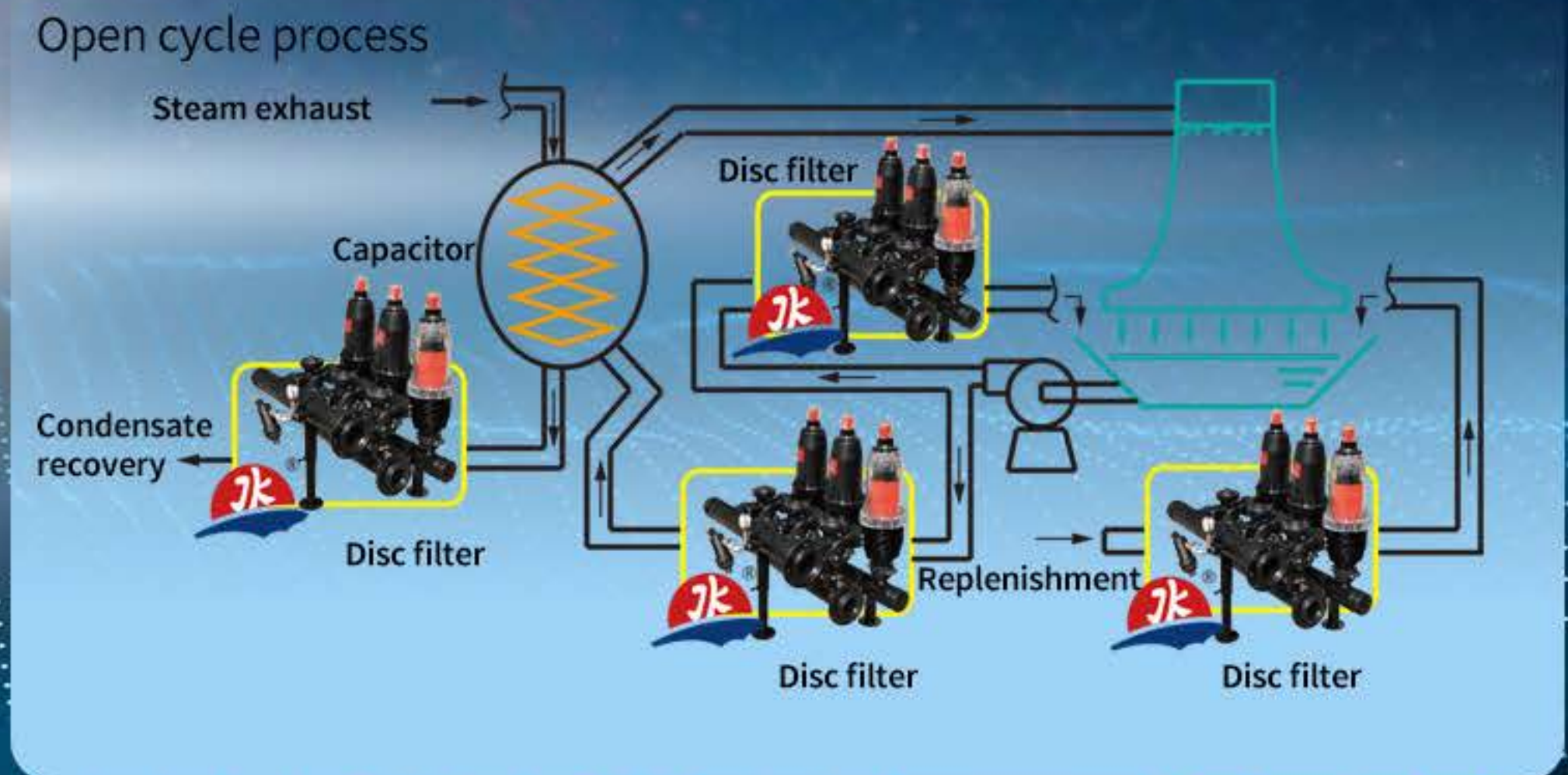
Flow Rate: 750m³/h





Cooling Tower Side Filtration

Filtration Grade: 100 μ m
Model: JY3-10-8 (57 sets)
Flow Rate: 10000m³/h





Membrane Pretreatment

RO & Ultra filtration membrane protection

Technology company in Nanchang

Filtration Grade: 100 μ m

Model: JYP2-4-4 (2 sets)

Flow Rate: 150m³/h





Ionexchange Pretreatment

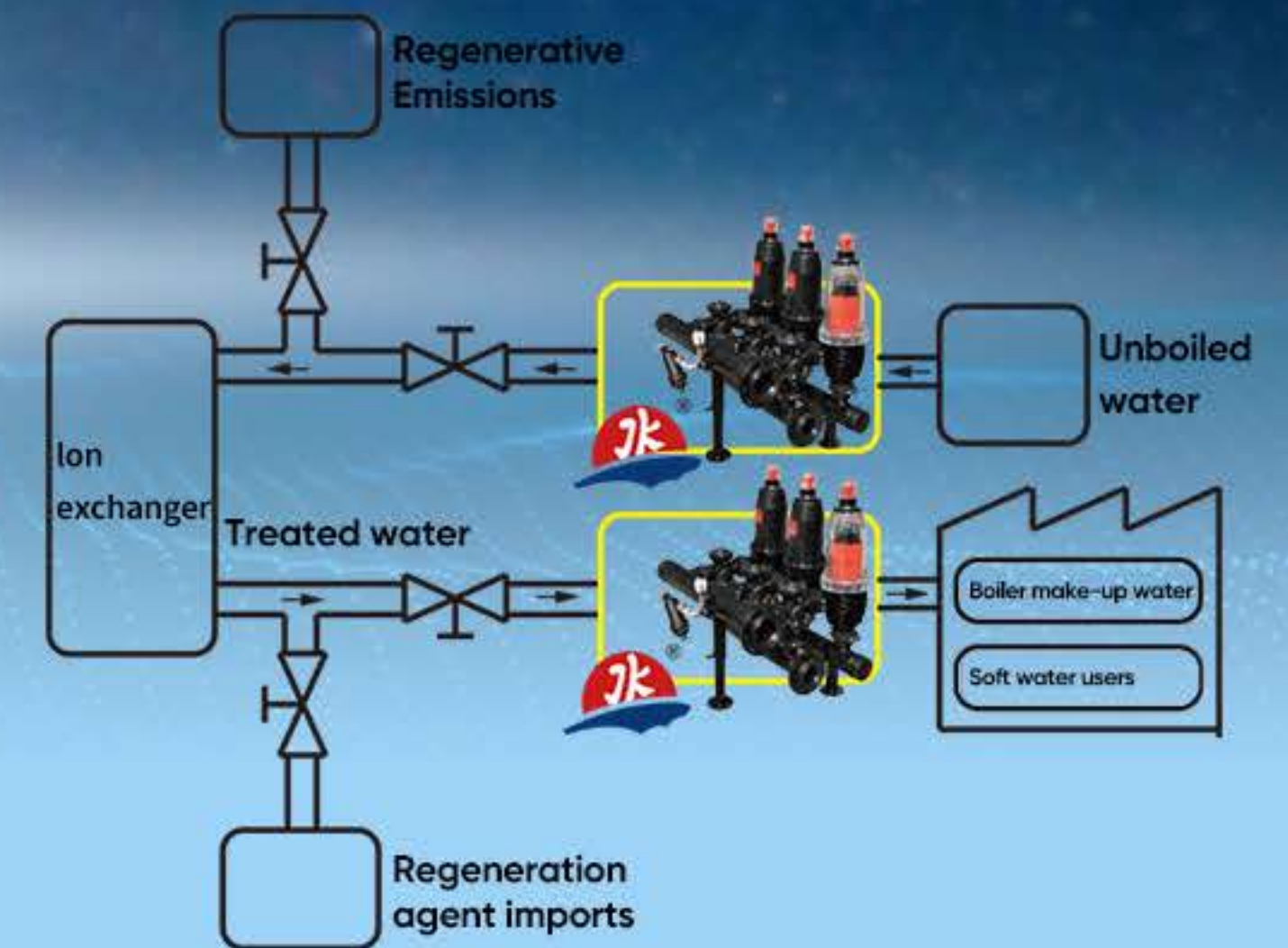
Ion exchange pretreatment, resin capture device.

Heating company in Shaanxi

Filtration Grade: 50 μ m

Model: JY3-12-10 (2 sets)

Flow Rate: 300m³/h





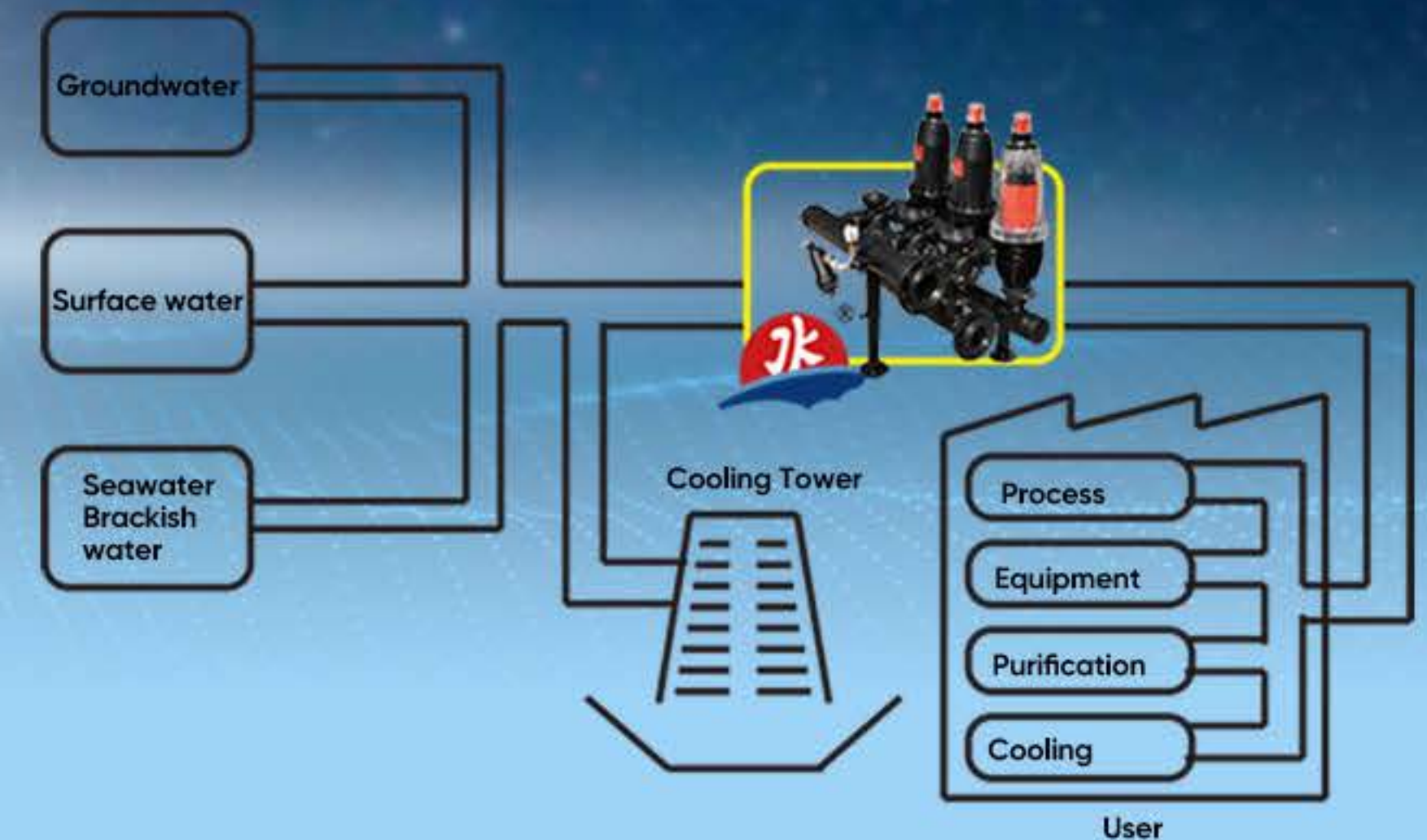
Industrial use feed water pretreatment

A chemical project in the west of China

Filtration Grade: 100 μ m

Model: JYF3-10 (4 sets)

Flow Rate: 800m³/h





Agricultural Irrigation

A Irrigation Project in Ningxia

Filtration Grade: 100 μ m

Model: JYP3-6-8

Flow Rate: 240m³/h



CLASSIC CASE

Flexible installation &
Saving land occupation

A water supply plant project in Erlianhot City

Filtration Grade: 100 μ m
Model: JYP3-10 (10 sets)
Flow Rate: 1000m³/h



JY3-10

Water treatment systems
Agricultural Irrigation
Desalination
Membrane protection
Cooling Tower
Paper-making industry
Textile industry
Mining & Steel
Chemical plant
Food & Berwery industry
Electronic industry
Coal & Power Plant
Printing & dyeing
Heating company
Water reuse



THANK YOU